

# Technical Data Sheet



## WQ-UV

### Complete Water Quality Solutions

*Engineered Solutions*

Lync WQ-UV is a complete, fully engineered water quality optimization solution that features sediment filtration and UV disinfection. Expertly designed by one manufacturer, WQ-UV is a compact, pre-assembled, and configurable system available in 50 or 100 GPM.

Because water heaters are exposed to a wide variety of water conditions including minerals, sediment, chemicals, and other threats, ensuring your system has optimal water quality will increase the performance, reliability, and life of your commercial water heating system.

Lync WQ-UV simplifies a complex system design, so it can be easily dropped into plans. With the ability to select the right configuration for each application, you can be assured that all components will work together to produce an optimal water quality solution. WQ-UV is configurable depending on the required system flow rate making it a perfect solution for both new and retrofit buildings across a variety of applications including hotels, restaurants, gyms, hospitals, factories, apartments, and schools.



## Features

### Fully Engineered and Factory-Assembled

- Components fastened onto a steel skid for safe and easy transportation and installation
- Plumbing and wiring are factory pre-assembled to minimize installation time and labor
- Systems available in 50 GPM or 100 GPM configurations
- Lower construction costs for new installations
- Reduced downtime during retrofits

### Superior Safety, Reliability, and Longevity

- Extends the life of your system, and increases overall performance

- Inactivates harmful microorganisms by destroying their ability to replicate and infect
- Reduces sediment in water
- The corrosion resistant polypropylene construction of the cartridge filter systems makes it an ideal choice in corrosive environments with aggressive water
- Decreases water heating costs

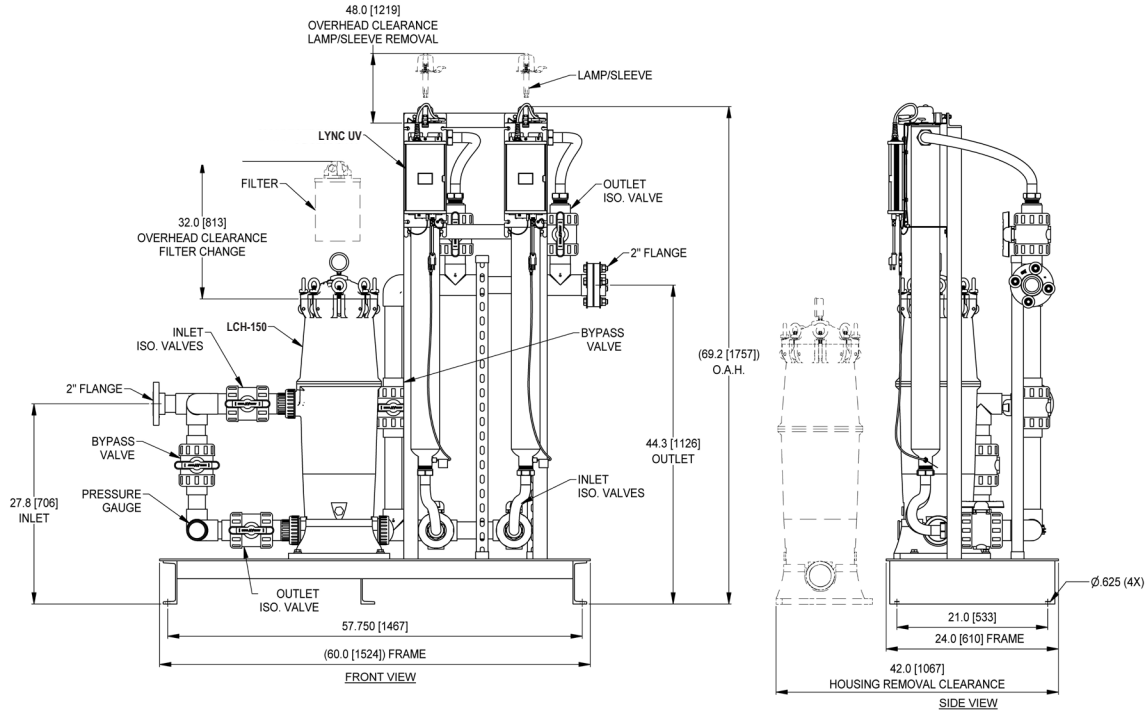
### Standard Components

- Cartridge Filtration System: Includes filter housing and replaceable filter cartridge
- UV Disinfection System: Includes reactor chamber(s), UV lamp(s), quartz sleeve(s), and system controllers

# Technical Data

Unit	WQUV-050-D	WQUV-100-D
<b>Performance</b>		
Number and type of Big Bubba Cartridge	1 – 5 micron pleated	
Number of UV Systems	1	2
Peak Flow Rate [GPM]	50	100
Max Operating Pressure [PSI]	125	
Max Operating Temperature [°F]	113	
Max Hardness <sup>2</sup>	7 Grains (120 mg/L as CaCO <sub>3</sub> )	
Max Iron	0.3 ppm	
Max Manganese	0.05 ppm	
Max Ambient Temperature/Humidity	122 °F / 95% Relative Humidity (non-condensing)	
UV Transmittance (UVT)	95% UVT	
<b>Electrical Data<sup>3</sup></b>		
Voltage [V], Frequency [Hz]	120 – 240 V, 50/60 Hz	
<b>Dimensions w/o Brine Tank(s)</b>		
Width [in]	48	60
Depth [in]	24	24
Height [in]	70	70
Shipping Weight [lbs]	650	750

1. Electrical data for single Lync UV System
2. Value displayed is for when the system is not used in conjunction with a water softener or approved scaled prevention



Dimensions of WQUV-100-D System  
For dimensions on all models, please refer to dimensional drawings.



Engineered Solutions

Fort Worth, TX • (817) 335-9531

© 2021 Lync