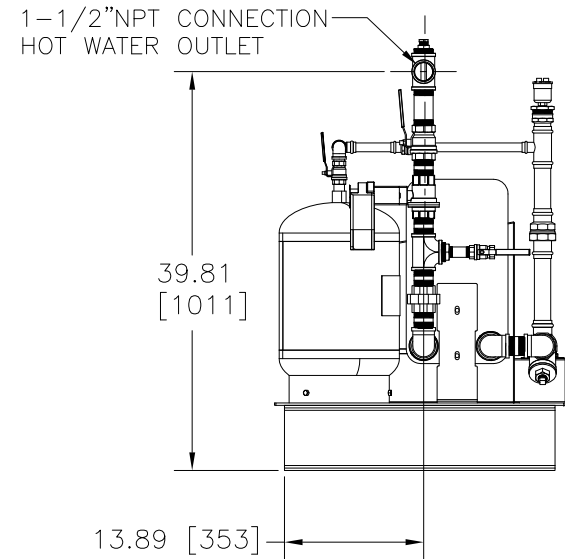
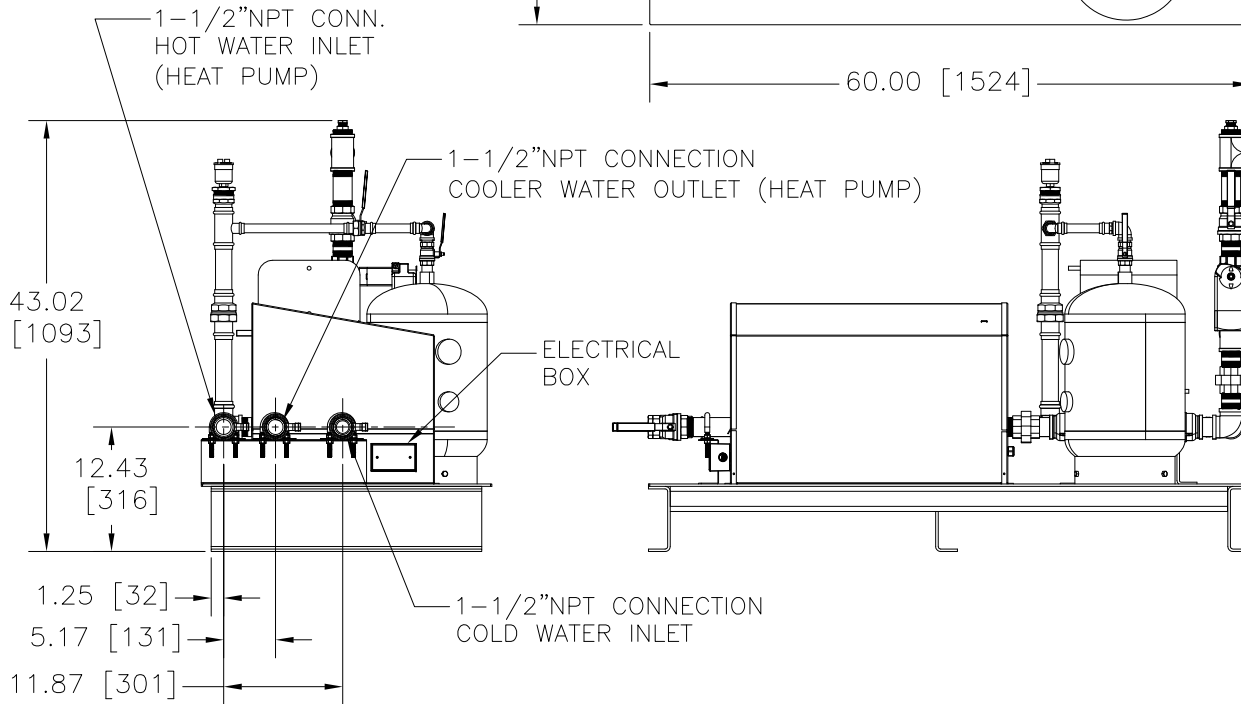
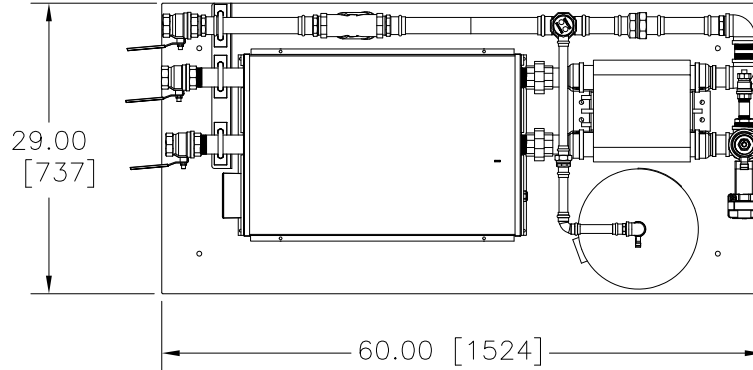
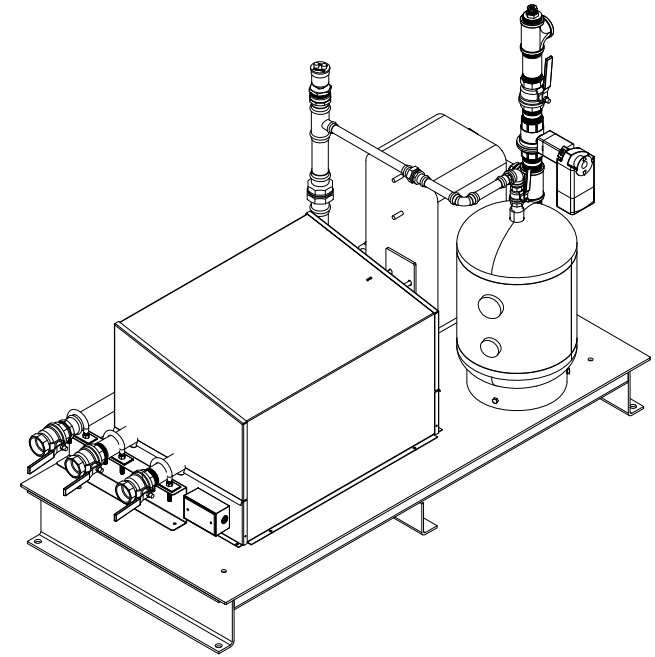


TECHNICAL DATA

WEIGHT (Lb/Kg)	556/252
HX SURFACE AREA (ft ² /m ²)	112.8/10.48
PRIMARY LOOP, PRESSURE RATING (PSI/KPa)	150/1,034
DHW SIDE, PRESSURE RATING (PSI/KPa)	175/1,027
ELECTRICAL DATA ON PUMP	115VAC 50/60Hz W/ 0.2-1.3A 0-10 VDC (SHUTTING OFF AT 1.6VDC) AVAILABLE HEAD: 10FT OF HEAD



NOTES:

- 1) ALL DIMENSIONS SHOWN ARE IN INCHES (MILLIMETERS).
- 2) LYNCO RESERVES THE RIGHT TO MODIFY DIMENSIONS WITHOUT PRIOR NOTICE.



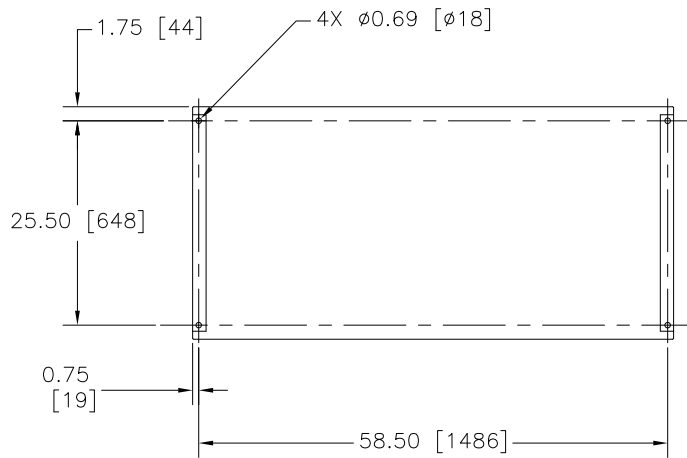
Blauvelt, NY
Fort Worth, TX

AEGIS HEAT EXCHANGER PACKAGE
DIMENSIONAL/CLEARANCE DRAWING

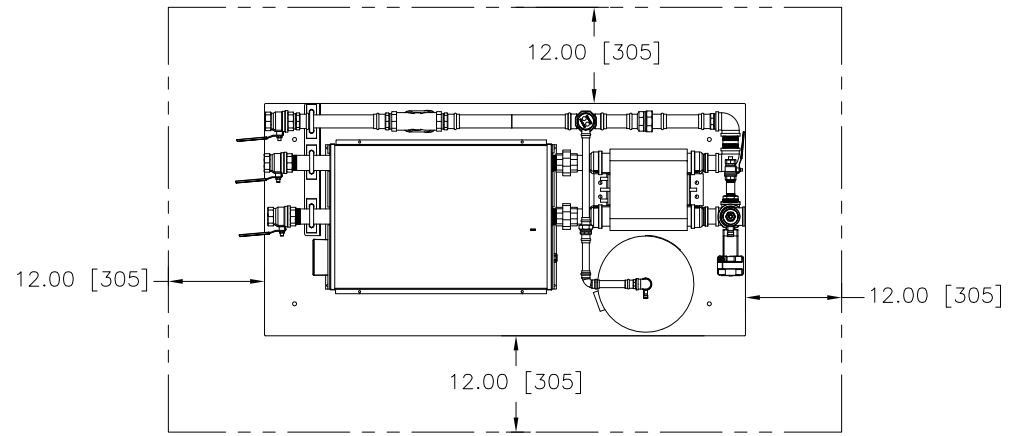
DWN.BY K.S. DATE 032521
SCALE NTS
REV.BY K.S. DATE 080723

AP-L-1062
(SHEET 1 OF 2)

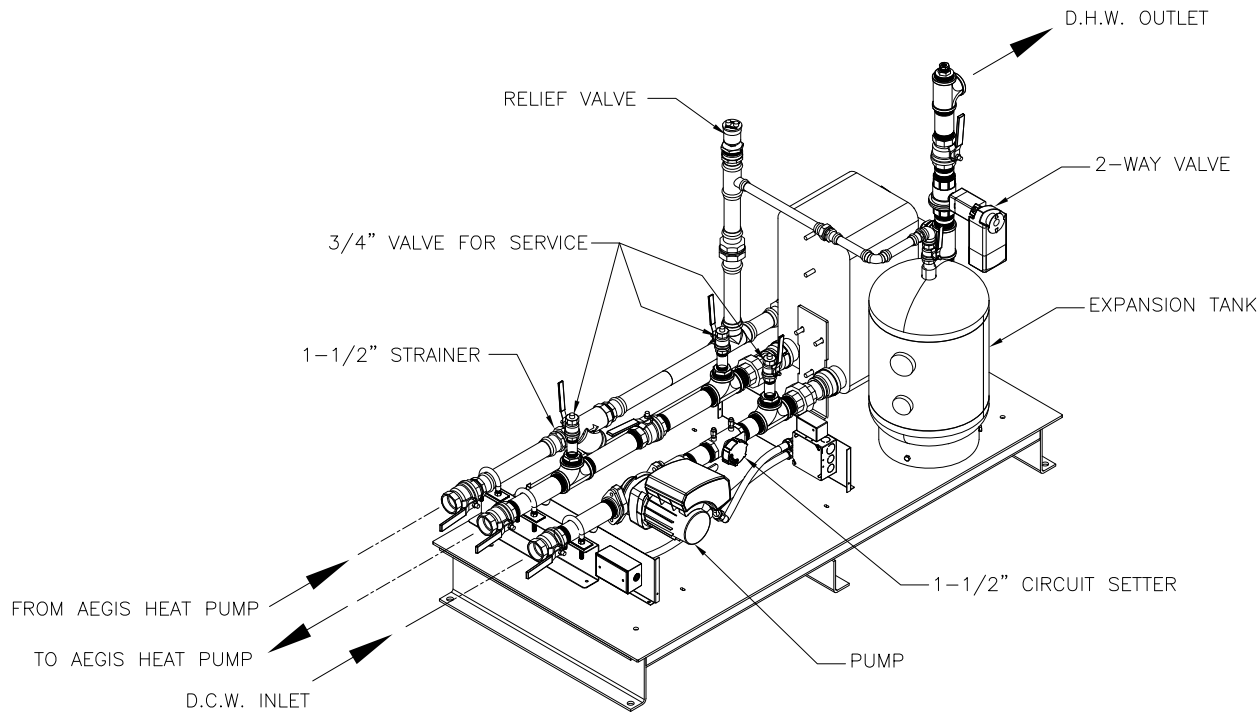
REV.
C



ANCHOR BOLT LOCATIONS



RECOMMENDED CLEARANCE



COVER REMOVED FOR CLARITY

		Blauvelt, NY Fort Worth, TX
AEGIS HEAT EXCHANGER PACKAGE DIMENSIONAL/CLEARANCE DRAWING		
DWN. BY <u>K.S.</u> DATE <u>032521</u> SCALE <u>NTS</u> REV. BY _____ DATE _____	AP-L-1062 (SHEET 2 OF 2)	REV. C