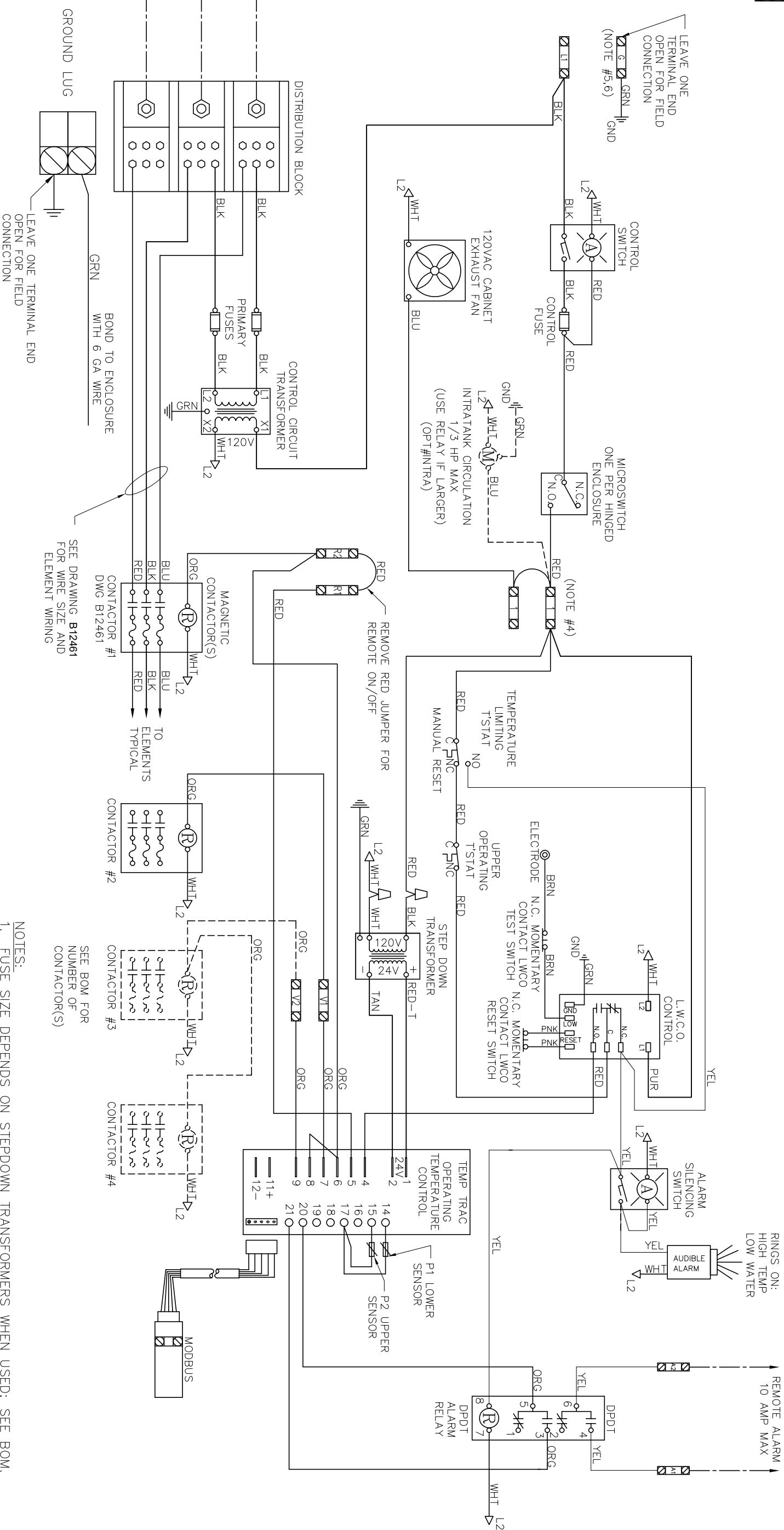


FIELD WIRING
 FACTORY
 AS REQUIRED



ELEMENT APPLICATION CHART, 480V 3 PHASE

480V 3 PHASE	TOTAL A	MODEL KW	CONTACTOR #1	CONTACTOR #2	CONTACTOR #3	CONTACTOR #4
6X30A FUSE	44A	36	2 X 9 KW	2 X 9 KW	~	~
6X60A FUSE	87A	72	4 X 9 KW	4 X 9 KW	~	~
9X60A FUSE	130A	108	4 X 9 KW	4 X 9 KW	~	~
12X60A FUSE	174A	144	4 X 9 KW	4 X 9 KW	2 X 18 KW	2 X 18 KW

- NOTES:**
1. FUSE SIZE DEPENDS ON STEPDOWN TRANSFORMERS WHEN USED. SEE BOM.
 2. ALL FIELD WIRING MUST BE IN ACCORDANCE WITH THE REQUIREMENTS OF LOCAL CODES AND THE NATIONAL ELECTRICAL CODE, NFPA #70, LATEST EDITION.
 3. ALL FACTORY AND FIELD WIRING IS 14 GA UNLESS OTHERWISE SPECIFIED.
 4. USE EXTRA TERMINAL BLOCKS IF MORE THAN THREE CONNECTIONS ARE NEEDED.
 5. USE EXTRA GROUND BLOKS IF MORE THAN THREE CONNECTIONS ARE NEEDED.
 6. CONNECT ALL GROUND CONNECTIONS TO ONLY ONE SIDE OF TERMINAL BLOCK.
 7. GROUNDING TERMINAL IS INTERNALLY GROUNDED TO TANK.
 7. INCLUDE AT LEAST 3 OPEN NEUTRAL (L2) TERMINALS FOR OPTIONAL EXPANSION.



FORT WORTH, TX
 BLAUVELT, NY
 WWW.LYNGBYWATTS.COM

THIS DRAWING, ITS PRINTS, AND ALL PARTS THEREOF ARE AND SHALL REMAIN THE PROPERTY LYNC BY WATTS AND MAY NOT BE REPRODUCED OR USED FOR ANY PURPOSE WITHOUT WRITTEN CONSENT.

NO	ECO	DATE	BY	DESCRIPTION	REVISIONS
~	9592-1	2/10/22	BCD	ORIGINAL RELEASE	

MATERIAL	SEE BOM
UNLESS OTHERWISE SPECIFIED, DIMENSIONS ARE INCHES (mm) TOLERANCES ARE	
FRACTIONAL ± 1/16	
DECIMAL ± .010	
ANGULAR ± 2'	
FINISH	125

WIRING DIAGRAM		NOMENCLATURE	
ELECTRIC WATER HEATER CONTROL W/ TEMPTRAC		SCALE	NTS
DRAWN	ZG	MODEL	LC ELECTRIC
CHECKED		DRAWING NO.	B12452
APPROVED		SHEET	1 OF 1