

MODEL NO.	GALLONS STORAGE	DIMENSIONS IN INCHES										WATER INLET, OUTLET, RETURN (NPT)	APPROX. SHIPPING WEIGHT, SIZE BY(kW)/(Lb)
		A	B	C	D	E	F	G	H	J	K		
LC250RXXX	250	50	69.88	3.93	18.25	42.51	31	56	29.25	31.44	52.50	2-1/2"	36kW / 1,034 72kW / 1,069 108kW / 1,103 144kW / 1,135
LC500RXXX	500	60.19	82.75	3.93	21.25	55.03	31	66	38.75	36.32	62.50	2-1/2"	36kW / 1,634 72kW / 1,666 108kW / 1,700 144kW / 1,735

NOTES:

1. JACKET PENETRATIONS:

FRONT: INLET, OPTION, DRAIN, RELIEF, ASME DATA PLATE (ACCESSIBLE)

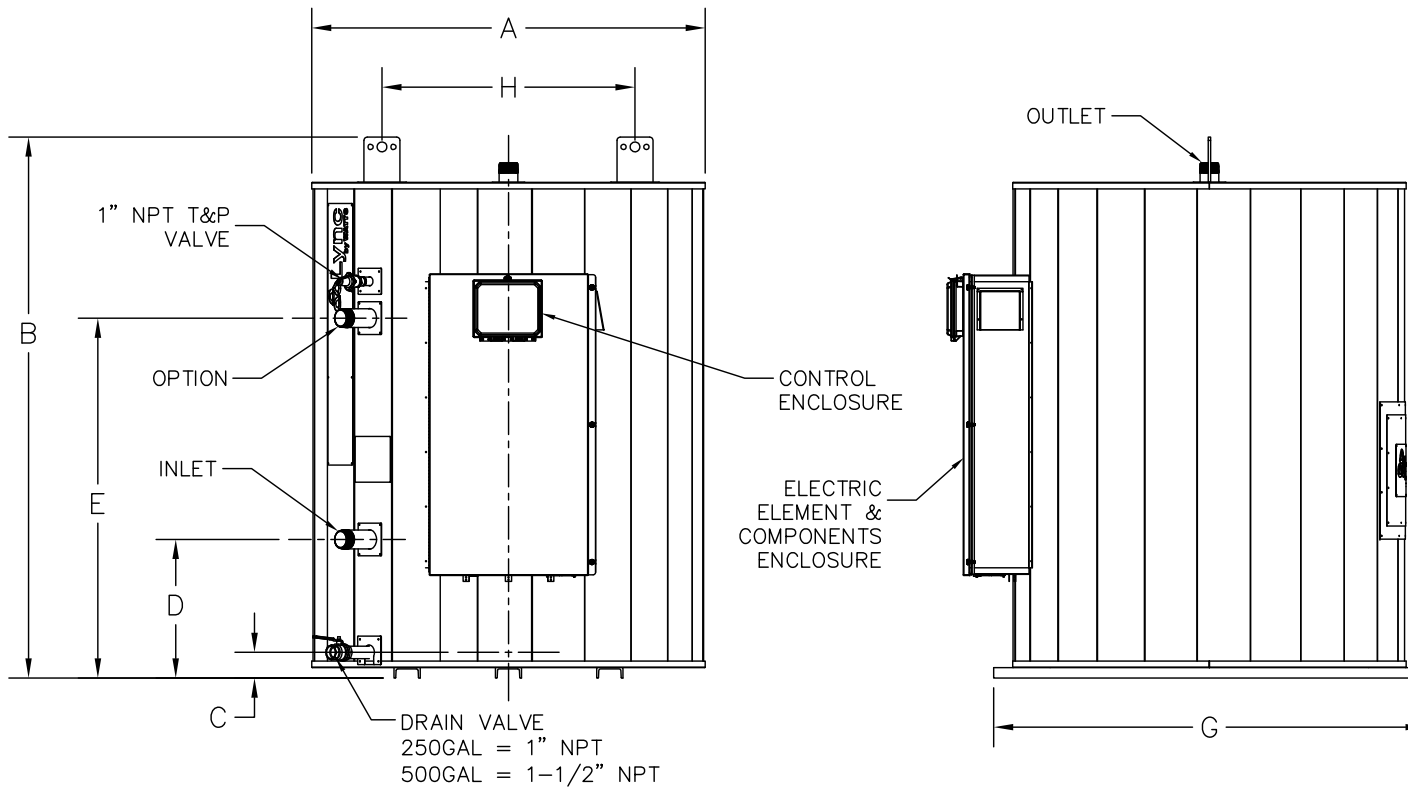
150PSI WORKING PRESSURE (225PSI HYDROTEST)

TOP: OUTLET

BACK: MANWAY, PROCESS FITTING (2IN, ONLY ON 500 GALLON AND LARGER) (BOTH ACCESSIBLE)

2 THERMOWELLS SUPPLIED INSIDE CONTROL PANEL AT THE TOP AND BOTTOM OF THE TANK SHELL
THERMOWELL DIAMETER 0.25", ACCEPTS 1/4" OR 6MM PROBES. CONNECTION 1/4" NPT

2. TANK SUPPLIED WITH WATTS LF140X9. ASME RELIEF CAPACITY 3,085,000 BTU/HR @ 150 PSI
CSA RELIEF CAPACITY 670,000 BTU/HR



LYNC RESERVES THE RIGHT TO MODIFY DIMENSIONS WITHOUT PRIOR NOTICE.

Lync by Watts
Blauvelt, NY
Fort Worth, TX

LYNC BOLT – ELECTRIC TANK
DIMENSIONAL DRAWING

DWN. BY <u>K.S.</u> DATE <u>022222</u>	AP-L-1077	REV. B
SCALE <u>NTS</u>		
REV. BY <u>K.S.</u> DATE <u>111723</u>		