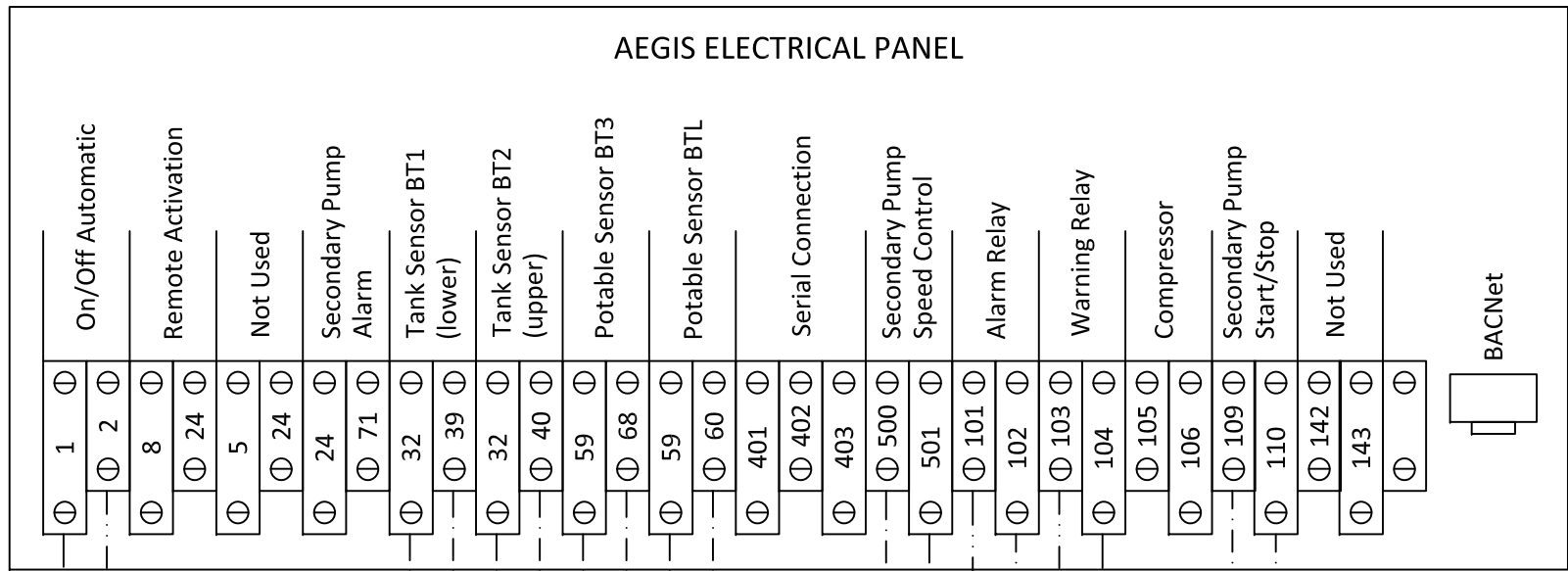
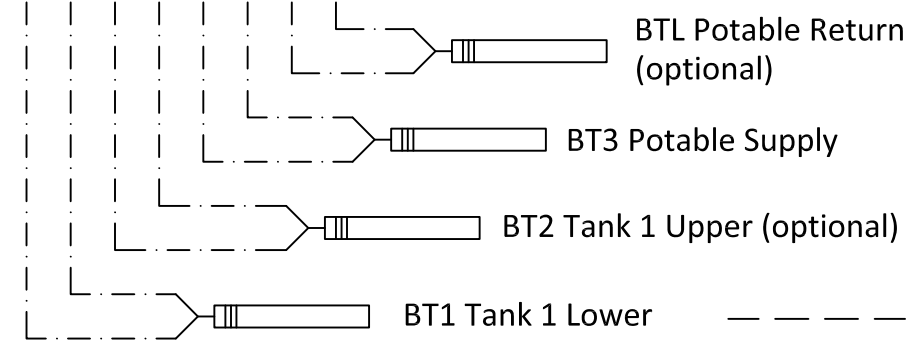
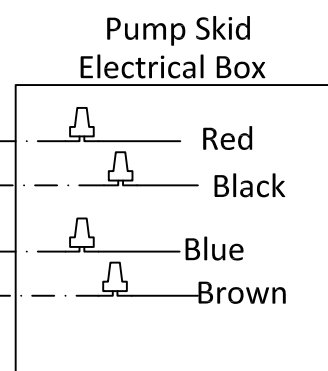
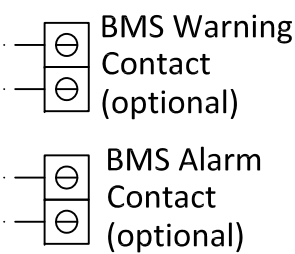


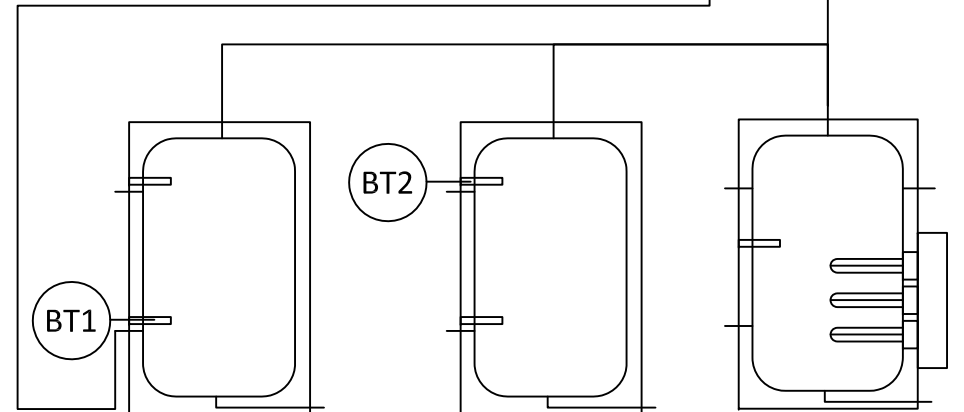
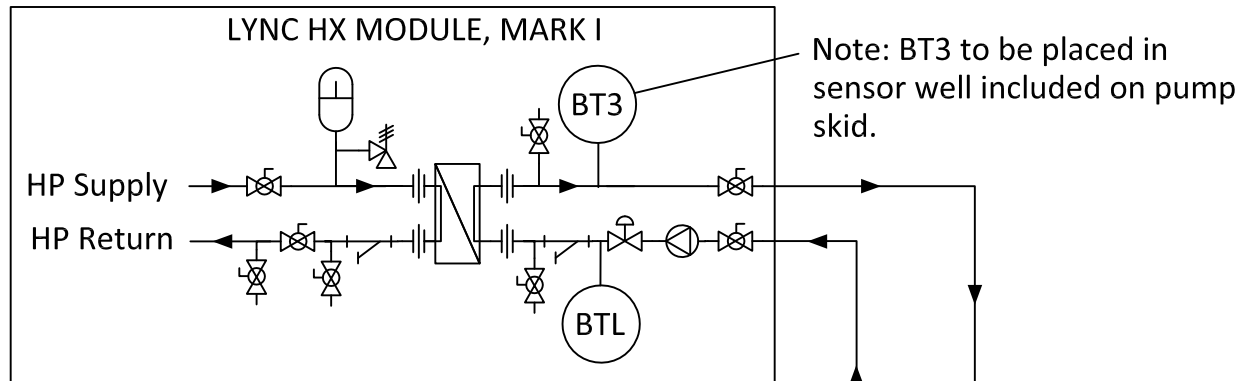
AEGIS ELECTRICAL PANEL



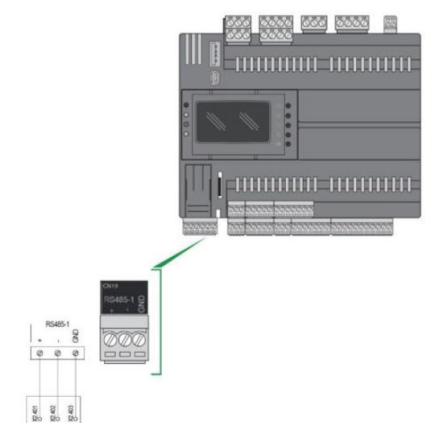
To BMS Enable Signal (optional)



- CAT5e / CAT6 as per BMS (BACNet IP)
- 18 AWG Twisted and Shielded Wire (150' max), 16 AWG (150' - 270') or 15 AWG 270' to 360')
- 24 AWG min

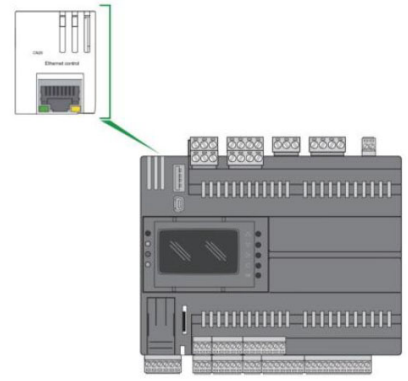


External Sensor Locations



Use RS485 port for:

- MODBUS RTU
- BACNet MSTP



Use the Ethernet port on the top of the controller for:

- MODBUS TCP
- BACNet IP.

For permanent connections, run CAT5e/CAT6 cable into enclosure and do not use the external connector.

A cable is supplied with the unit to the external connection.

NOTES:
1) NOT FOR CONSTRUCTION.

		Blauvelt, NY Fort Worth, TX
AEGIS SINGLE HP WIRING		
DWN. BY <u> K.S. </u> DATE <u> 090622 </u>	SCALE <u> NTS </u>	SD-L-1249
APPD. _____ DATE _____	REV. <u> A </u>	