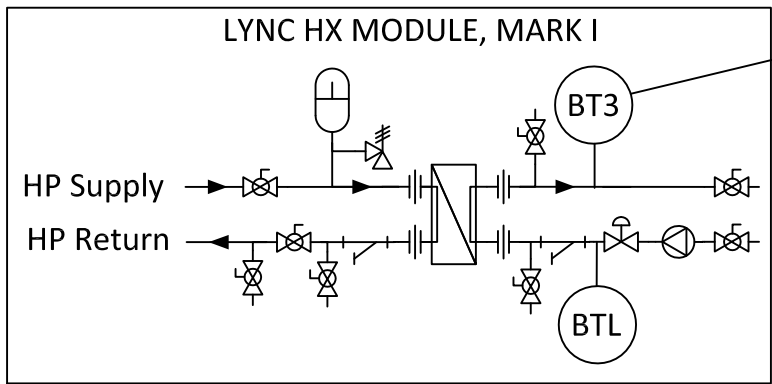
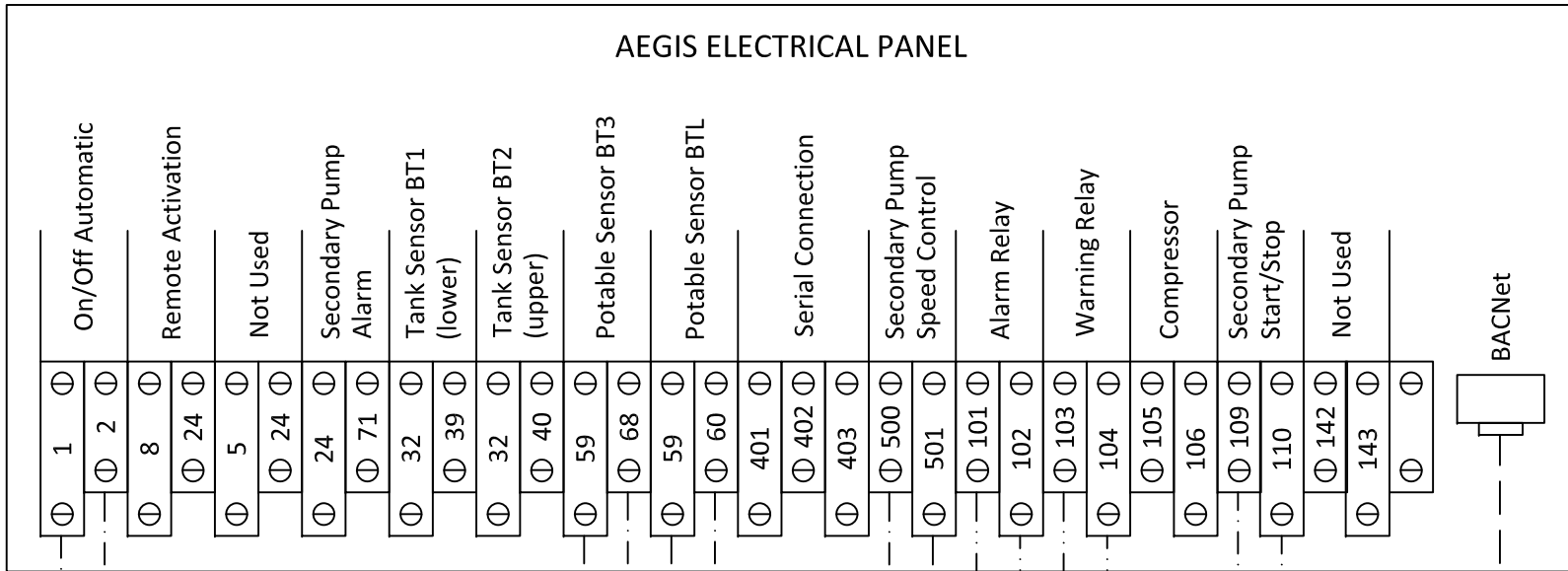
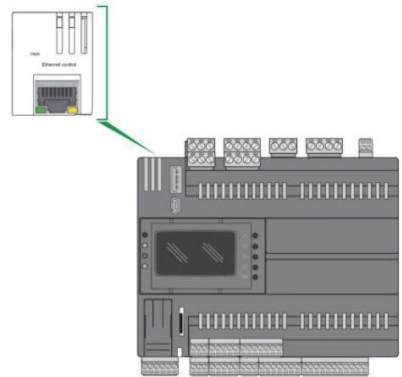


AEGIS ELECTRICAL PANEL



External Sensor Locations



A cable is supplied with the unit to the external connection.

Connections to the MU controller use the Ethernet connection on the top of the controller. Remove cable to front panel of unit and make sure this is covered.

For permanent connections, run CAT5e/CAT6 cable into enclosure and do not use the external connector.

- NOTES:**
- 1) NOT FOR CONSTRUCTION.
 - 2) WIRING THE SAME FOR EACH OF THE HEAT PUMPS.

To BMS Enable Signal (optional)

To MU

BMS Warning Contact (optional)

BMS Alarm Contact (optional)

Pump Skid Electrical Box

- Red
- Black
- Blue
- Brown

BTL Potable Return (optional)

BT3 Potable Supply

- CAT5e / CAT6 as per BMS (BACNet IP)
- 18 AWG Twisted and Shielded Wire (150' max), 16 AWG (150' - 270') or 15 AWG 270' to 360'
- 24 AWG min

		Blauvelt, NY Fort Worth, TX
AEGIS MU HP WIRING		
DWN.BY <u>K.S.</u> DATE <u>090622</u> SCALE <u>NTS</u> APPD. _____ DATE _____	SD-L-1250	REV. A