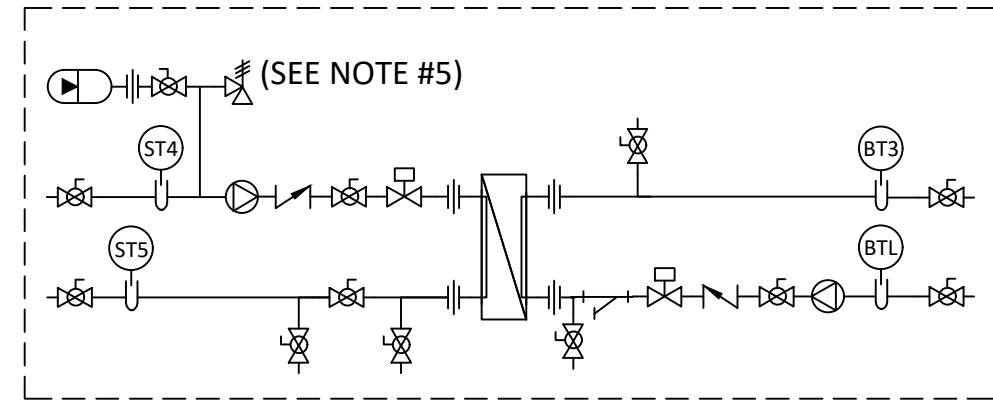
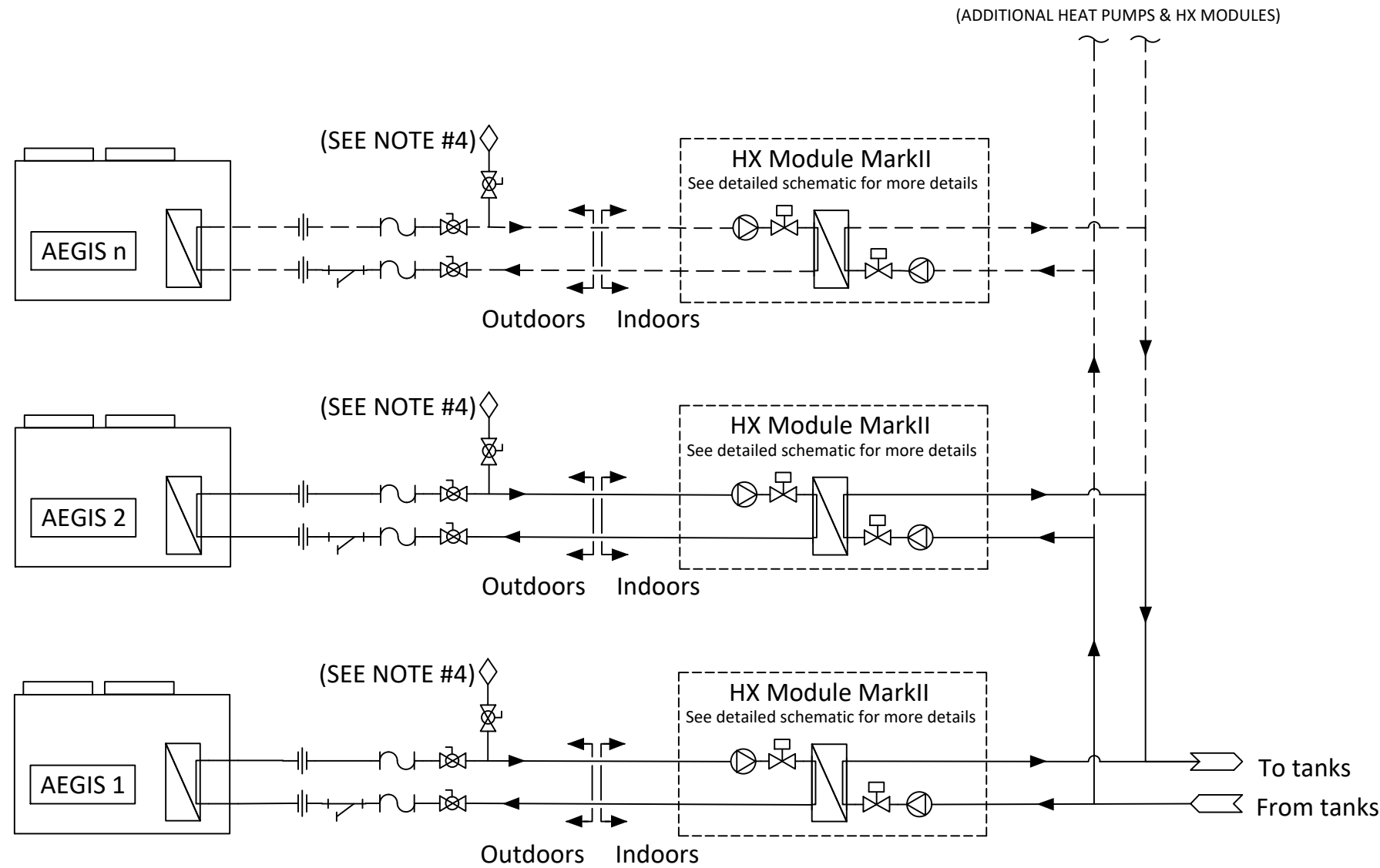


AEGIS HEAT EXCHANGER MODULE MKII



Symbols

- Pressure Relief Valve
- Balance Valve
- Union
- Air Eliminator
- Pump
- Strainer
- Flexible Fitting
- Mixing Valve
- Ball Valve
- Expansion Vessel
- Check Valve
- Motorized Valve



NOTES:

- 1) NOT FOR CONSTRUCTION.
- 2) FINAL HEAT EXCHANGER MODULE DESIGN SUBJECT TO CHANGE.
- 3) PIPE FLOW VELOCITY NOT TO EXCEED 2 ft./sec. USE 1-1/4" COPPER PIPE FOR AEGS 250 AND 350 AND 1-1/2" COPPER PIPE FOR AEGIS 500 BETWEEN HEAT PUMPS AND SKIDS.
- 4) AIR ELIMINATOR MUST BE INSTALLED AT THE HIGHEST POINT IN PLUMBING. MANUAL SHUT OFF VALVE RECOMMENDED BELOW AIR VENT.
- 5) PRV MUST BE PIPED WITHIN 18" OF FLOOR OR PER PLUMBING CODE ON EACH HEAT EXCHANGER MODULE.

Lync
by WATS
Blauvelt, NY
Fort Worth, TX

AEGIS MARK II SINGLE FOR
2 OR MORE UNITS INSTALLATION

DWN.BY K.S. DATE 040324
SCALE NTS
APPD. K.S. DATE 070124

SD-L-1304

REV.
A