

Technical Data Sheet

Lync Custom Electric Storage Tank

Lync Custom Electric Storage Tanks are heavy-duty, medium to large capacity electric water heaters constructed with individual heating elements rated at 9 or 18kW that are combined for higher recovery requirements, rather than larger, high-kilowatt tube bundles that can be difficult to maintain.

Features and Benefits

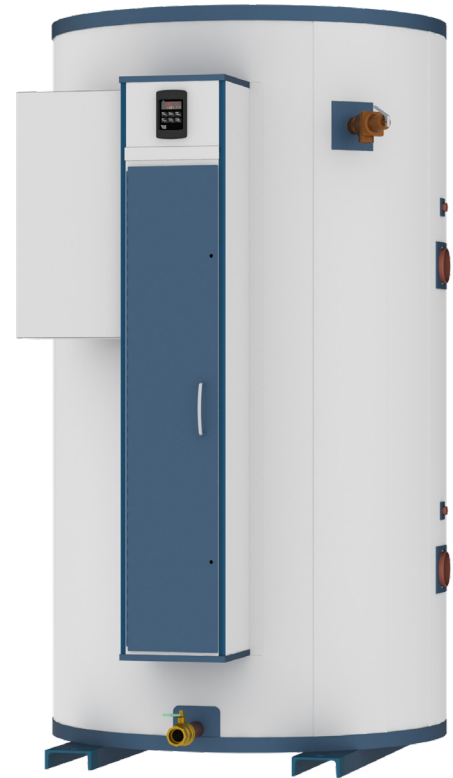
- 480V, 3-phase standard construction (optional voltages are 208/3, 240/3, 380/3, 400/3, and 600/3)
- 98% thermal efficiency
- Incoloy sheathed heating elements with bronze mounting flanges
- Fiberglass insulation meets requirements of ASHRAE/ IESNA 90.1
- Tank sizes available up to 3000 gallons
- Higher kW inputs (varies by tank)

Corrosion Protection

- Highly durable engineered duplex stainless steel storage tank
- Corrosion-resistant in potable water at any temperature
- Highly resistant to chloride stress corrosion cracking
- No lining or anode rods required or used
- Non-ferrous, removable tank connections

Certifications & Standards

- ETL listed to ANSI/CSA safety standards
- ASME, section IV, part HLW stamped and National Board Registered
- Optional ASME section VIII, high pressure and/or high temperature (>160 psi)



Unmatched Corrosion Resistance with Duplex Stainless Steel

Our revolutionary engineered design combines duplex stainless steel alloy with highly specialized and proprietary manufacturing process. The result is a long-lasting, reliable water heater with superior corrosion-resistance.

Designed for Complete Systems

The Lync custom electric tanks are designed with heat pumps water heating systems in mind. The tanks include an integral inlet diffuser to encourage stratification and reduce heater cycling.

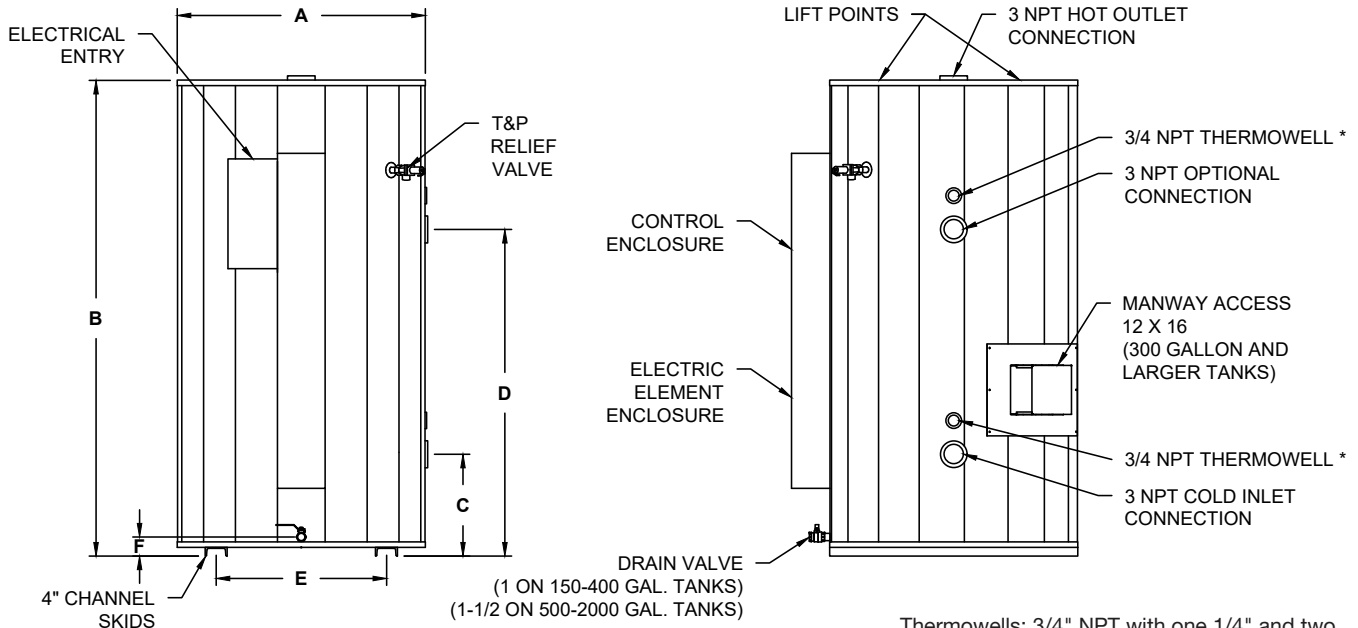
Warranty

Proprietary design equipped with durable material and quality craftsmanship enable us to provide an industry leading warranty of 25 years.

Technical Specifications

| Model | kW Input | 208/3 | Model | kW Input | Element Amps | | | | Storage gal. | Dimensions in Inches | | | | | | Approx. Shipping Weight lbs | |
|-------|----------|-----------------|-------|----------|--------------|----------|----------|----------|--------------|----------------------|-----|----|----|----|---------|-----------------------------|--|
| | | Amps | | | 240V, 3ø | 380V, 3ø | 480V, 3ø | 600V, 3ø | | A | B | C | D | E | F | | |
| 45 | 9 | 27 | 45 | 9 | 24 | 16 | 13 | 11 | 150 | 34x37 | 63 | 16 | 43 | 21 | 2 9/16 | 1130 | |
| 90 | 18 | 52 | 90 | 18 | 46 | 29 | 24 | 19 | 200 | | 75 | | 49 | | | 1220 | |
| 140 | 27 | 77 | 140 | 27 | 67 | 43 | 35 | 28 | 250 | | 85 | | 57 | | | 1265 | |
| 180 | 36 | 102 | 180 | 36 | 89 | 57 | 46 | 37 | 300 | 46 | 75 | 19 | 50 | 31 | 2 3/4 | 1295 | |
| 230 | 45 | 127 | 230 | 45 | 111 | 70 | 57 | 45 | 400 | | 87 | | 58 | | | 1340 | |
| 270 | 54 | 152 | 270 | 54 | 132 | 84 | 67 | 54 | 500 | 56 | 78 | 23 | 52 | 31 | 3 | 1765 | |
| 320 | 63 | 177 | 320 | 63 | 154 | 98 | 78 | 63 | 600 | | 90 | | 60 | | | 1990 | |
| 370 | 72 | 202 | 370 | 72 | 176 | 111 | 89 | 71 | 750 | 67 | 83 | 23 | 55 | 40 | 3 11/16 | 2130 | |
| 410 | 80 | 224 | 410 | 81 | 197 | 125 | 100 | 80 | 900 | | 95 | | 63 | | | 2350 | |
| 460 | 90 | 253 | 460 | 90 | 219 | 139 | 111 | 89 | 1000 | | 107 | | 71 | | | 2570 | |
| 510 | 99 | 278 | 510 | 99 | 241 | 152 | 122 | 97 | 1250 | 75 | 96 | 23 | 64 | 47 | 3 7/16 | 3390 | |
| 540 | 105 | 294 | 550 | 108 | 262 | 166 | 132 | 106 | 1500 | | 108 | | 72 | | | 3605 | |
| 610 | 120 | 336 | 650 | 126 | 306 | 193 | 154 | 123 | 1750 | | 132 | | 88 | | | 4045 | |
| 690 | 135 | 378 | 740 | 144 | 349 | 221 | 176 | 141 | 2000 | | 144 | | 96 | | | 4520 | |
| 770 | 150 | 419 | 830 | 162 | 392 | 248 | 197 | 158 | | | | | | | | | |
| 840 | 165 | 461 | 920 | 180 | 436 | 275 | 219 | 175 | | | | | | | | | |
| 920 | 180 | 503 | 1010 | 198 | 478 | 303 | 240 | 193 | | | | | | | | | |
| 1000 | 195 | 545 | 1100 | 216 | 522 | 330 | 262 | 210 | | | | | | | | | |
| 1080 | 210 | Consult Factory | 1200 | 234 | 565 | 358 | 283 | 228 | | | | | | | | | |
| 1160 | 225 | | | | | | | | | | | | | | | | |
| 1240 | 240 | | | | | | | | | | | | | | | | |

The above table represents our most common configurations. Inputs up to 360kW are available. For higher kW input, alternate voltages and alternate kW steps, contact your Lync representative. For larger storage capacities, consult factory.



Thermowells: 3/4" NPT with one 1/4" and two 4mm openings.
Includes R-12.5 insulation.
Tank sizes 1000, and 1500-2000 gallon include horizontal shipping skids (not shown).



Engineered Solutions